

Figure 1-3. The PSYOP cycle.

Figure 10-4. Print production steps.

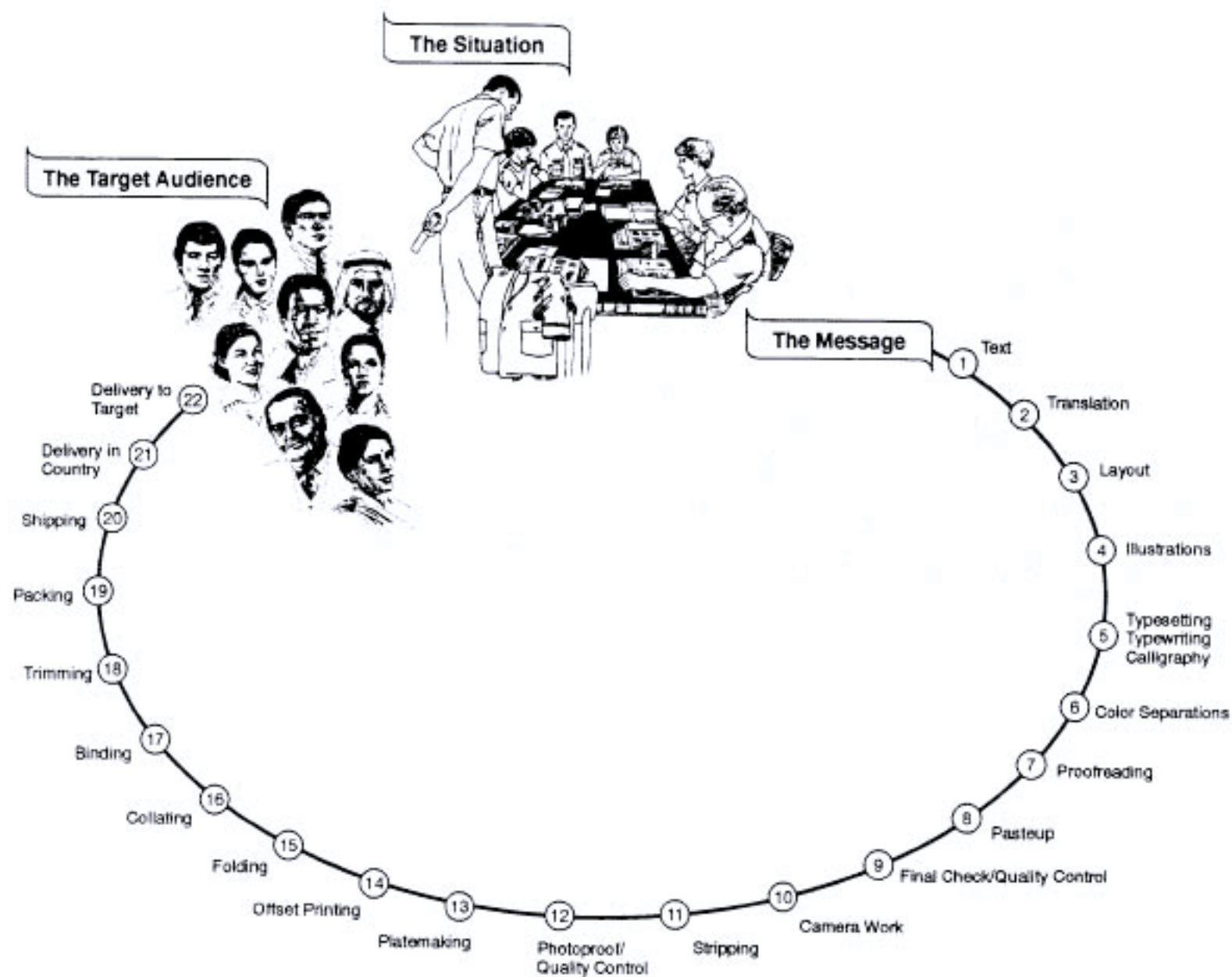
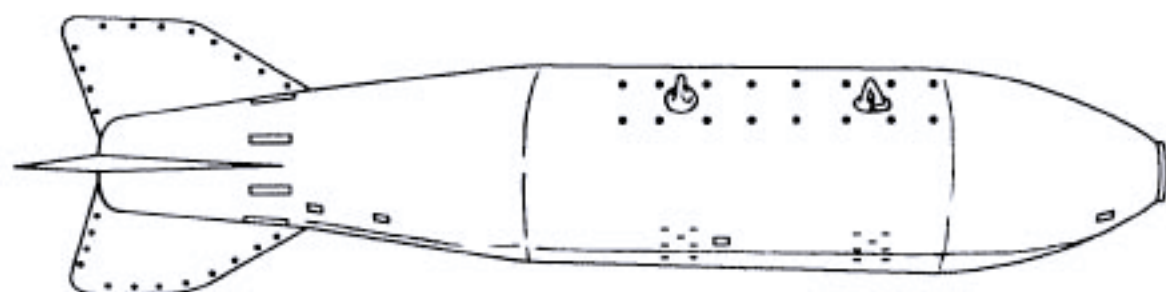


Table G-9. Leaflet rolling formula (M129 leaflet bomb).

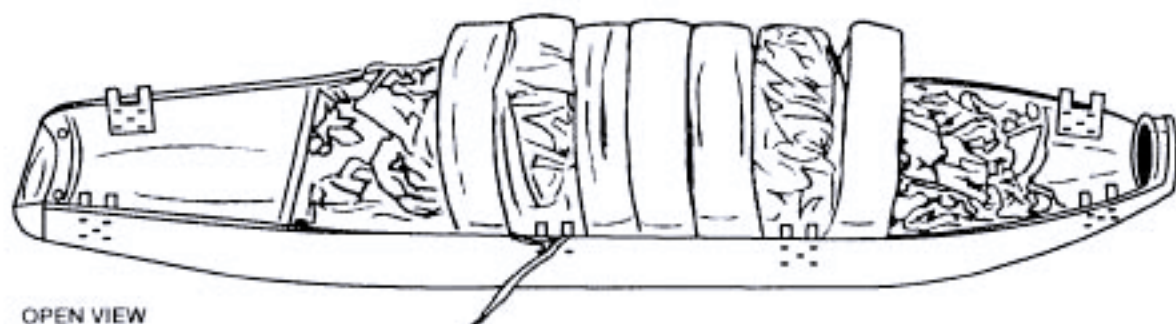
Number of M129 Leaflet Bombs	Number of Rolls and Leaflets	Time	Number of Personnel
1	8 to 12 rolls of 14-inch diameter	1.5 hours	6
16	1 million leaflets	24 hours	6

Mission

1 million leaflets for 16 M129 leaflet bombs.
 24 hours to roll.
 6 hours to pack/set detonator.
 2 hours to load.



CLOSED VIEW



OPEN VIEW

Figure G-9. M129E1/M129E2 leaflet bomb, open and closed views.

Dissemination

The M129E1/M129E2 can be used only on aircraft not requiring forced ejection for release from a bomb shackle. Figure G-10, page G-17, illustrates leaflet dissemination aircraft and the number of M129E1s/M129E2s bombs they can carry.

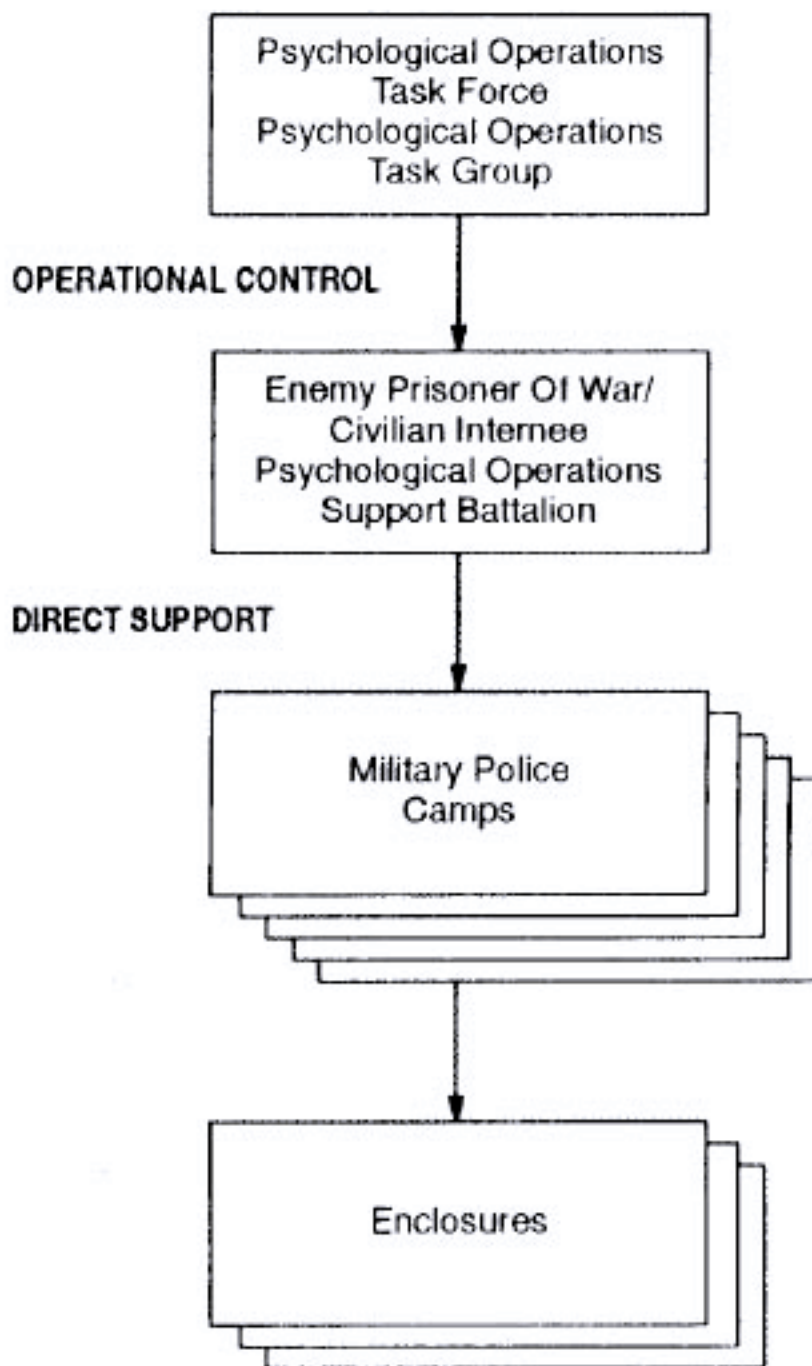


Figure 13-1. Command relationships.

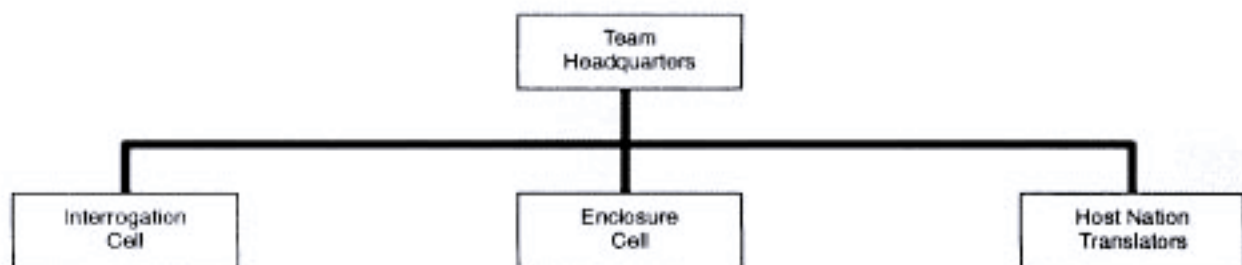


Figure 13-4. Task-organized EPW/CI PSYOP corps/JTF-level collection facility support team.

The EPW/CI PSYOP support battalion command section (Figure 13-5), with its EPW/CI headquarters and support company (Figure 13-6, page 13-5), locates with the MPPWCOM headquarters.

The EPW/CI PSYOP support teams live at the MP personnel support site and work in the processing area. The MP unit provides life support such as mess, medical, mail, security, and fuel. The EPW/CI PSYOP support team interrogation cell interviews newly arriving EPWs/CIs for PSYOP-relevant information and conducts pretests/posttests (Figure 13-7, page 13-6, is an example of a typical theater EPW/CI camp layout. The EPW/CI PSYOP support team segregates EPWs and civilian internees into separate enclosures.

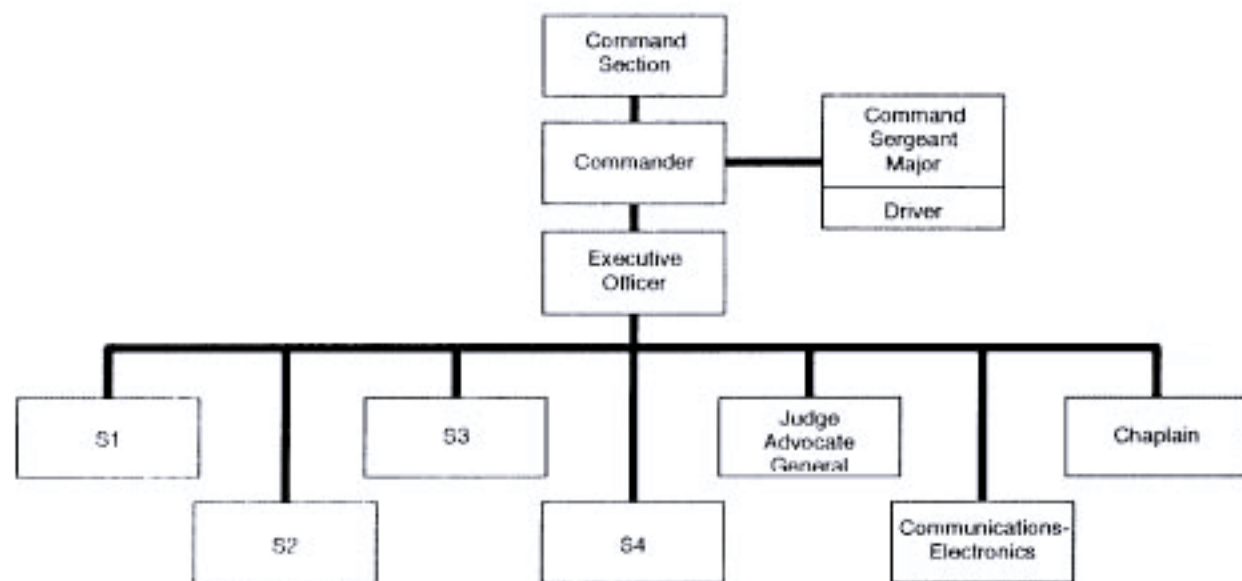


Figure 13-5. EPW/CI PSYOP support battalion command section.

The EPW/CI PSYOP support team leader advises the EPW/CI camp MP commanders of the psychological impacts of their actions. This support is critical in preventing misunderstanding and subsequent disturbances by the EPWs/CIs.